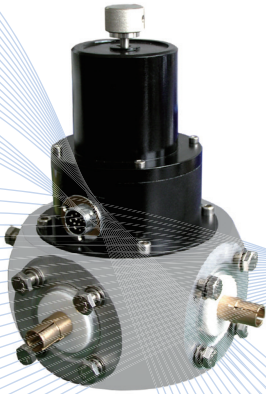


COAXIAL SWITCHING

RL158-10



Name	Coaxial Switching
Model	RL158-10
Controlling method	Manual and automatic
Average power	DC-880MHz (<7kW) DC-2MHz (< 20kW)
Connectors	4× 1 5/8" EIA Flanged
Frequency range	DC-880MHz
VSWR	< 1.08
Insertion loss	< 0.08dB
Isolation	≥ 65dB
Switching time	< 0.2s
Body case material	Aluminum alloy antioxidation coating
Weight	5kg
Amounting support	Vertical
Operating voltage/Frequency/Current	220V/50Hz/0.5A
Interlock output connector	1) Interlock of main and backup transmitter: 2 PIN 2) Interlock of dummy load: 2 PIN
Interlock tiqian protection time	0.014s

(BED-KGKZ-2000) Coaxial Switching Controller

Position indicator	Two sets of indicator
Controlling method	Local/Remote
Dummy load status	One set of indicator
Switching power supply	One set of Switches
Transmitter interlocking A/B	2 PIN/transmitter
Dummy load interlocking	2 PIN
Outside switching controlling	4 PIN (Remote motor control)
Remote position status	4 PIN
Remote dummy load status	2 PIN (Remote)
Controller dimension	19 Inches 1U



Tel: +8610 80119366
 Fax: +8610 69705030
 E-mail: BED@RF-BED.com