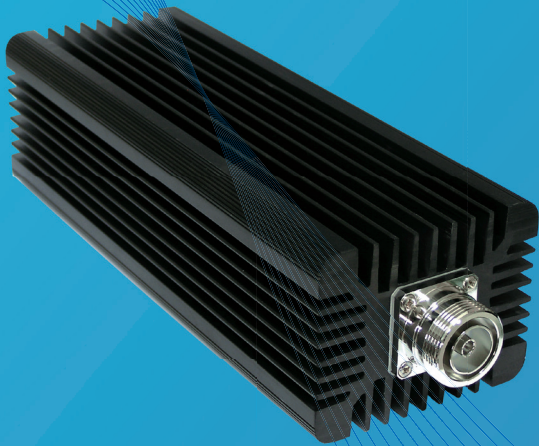




DLC SERIES AIR
COOLED DUMMY LOAD

DLC200W

AIR COOLED DUMMY LOAD



Power rating	200W
Frequency range	(I) DC-1GHz (II) DC-2GHz (III) DC-3.2GHz
Impedance	50 Ω
VSWR	≤ 1.10 (1GHz) ≤ 1.15 (2GHz) ≤ 1.25 (3.2GHz)
Input connectors	N-50KF、 N-50JF、 L27、 7/16
Cooled	Air cooled
Nominal dimensions	275×90×70(mm)
Nominal weight	2.7(kg)
Ambient temperature	-40°C ~ +40°C



Tel: +8610 80119366
Fax: +8610 69705030
E-mail: BED@RF-BED.com